



Rohnert Park

THE PERFECT CLIMATE
(for growing businesses)



44k
POPULATION

Source: Sonoma.EDB.org 2021

HOLD COLLEGE
DEGREES

28%



Source: Sonoma.EDB.org 2021

Sonoma State University

educated workforce

business friendly

ease of commute

raise a family

affordable rents

thriving business

good schools

\$66k



MEDIAN
HOUSEHOLD
INCOME

Source: U.S. Census Bureau 2021

MEDIAN
AGE

35



Source: U.S. Census Bureau 2021

Cost of Doing Business in Rohnert Park vs. San Francisco

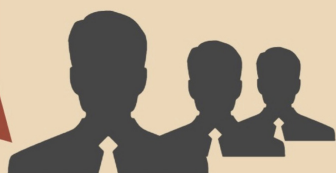
Average
Business
Rents
63% less
than San
Francisco

Office \$1.66 SQ. FT.

Industrial \$1.10/SQ. FT.

75% Less than
San Francisco

51% Less than
San Francisco



Source: Q3 Cushman Wakefield/Loopnet 2021



Wages are
42% less
than San
Francisco

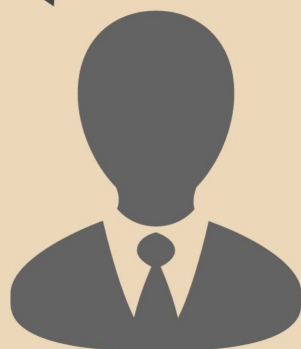
Source: Bureau of Labor Statistics 2021

"If business friendliness was an Olympic sport,
Rohnert Park would win the gold medal."

Rohnert Park

San Francisco

\$0 \$25,000 \$50,000 \$75,000 \$100,000



- Bruce Orr, 356 Advisors



Apartment Rents

Renting
in
Rohnert
Park is
32% less
than San
Francisco
1-bedroom

\$7,500

\$5,000

\$2,500

\$0

1-bedroom

2-bedroom

Rohnert Park Median

San Francisco Median

53% of homes in
Rohnert Park are
owner occupied



Source: Sonoma.EDB.org 2021

Housing Prices

Come get settled in
Rohnert Park where
median single family
home and condo
purchase prices are

58% lower

than our
neighbor,
San Francisco



Source: Zillow / Trulia 2021

Rohnert Park
\$545,000



San Francisco
\$1,134,674



Rohnert Park

Let us help you get settled.

Don Schwartz, Assistant City Manager ☎ 707.588.2242 ✉ dschwartz@rpcity.org